


KENTUCKY COAL MUSEUM

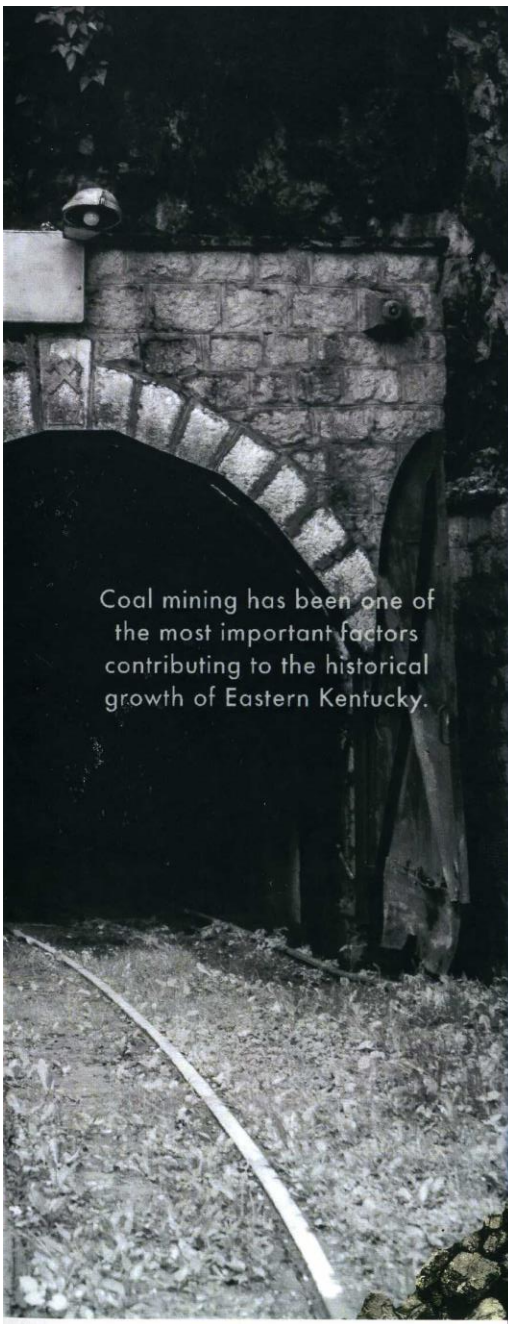
MUSEUM HOURS



Tuesday-Saturday 10-5
Closed Sunday and Monday
For more information
contact the museum at:
606-848-1530



231 Main St.
Benham, KY 40807



Coal mining has been one of the most important factors contributing to the historical growth of Eastern Kentucky.



MINING



The History of Coal

VISIT COAL COUNTRY

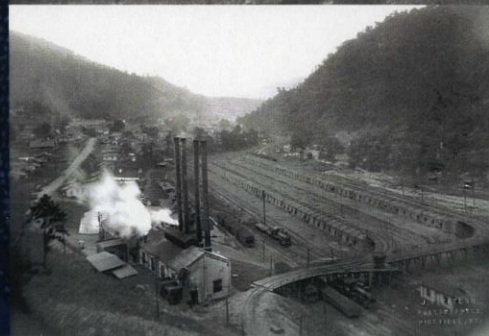
You'll find the Kentucky Coal Museum deep in the heart of Appalachia in Harlan County, Kentucky.

The museum's many exhibits will teach visitors about coal miners and their families, along with their role in the industrial revolution of the 20th century.

WHAT YOU'LL DISCOVER

With four levels of exhibits and displays, you'll see exciting things like:

- Mock mine
- Life of a coal miner and their family
- Community art mural of Benham
- Mining tools
- Native American and early settler displays
- Coal Camp Hospital
- Coal Camp School
- Coal camps as multi-cultural places
- Mine safety exhibits
- Loretta Lynn Exhibit



MORE THAN MINING

The Kentucky Coal Museum also hosts a variety of community events and educational programs.

- The "History Alive" radio program
- History days
- Coal and STEAM Days
- Local musician visits
- Recollections senior programming
- The Festival of Trees
- Energy Club for elementary and high school students

PLAN A TRIP

The Kentucky Coal Museum is great for people of all ages. There are displays for the young, and the not so young! And everyone will enjoy finishing the day with a visit to the Museum Gift Shop. We hope to see you soon.

